

# State of Wyoming Corner Record

(In compliance with the CORNER PERPETUATION AND FILING ACT, Wyoming Statutes, 2013 Section 33-29-901 through 33-29-910, and the Rules and Regulations of the Board of Professional Engineers and Professional Land Surveyors)

Reverse side of this form may be used if more space is needed.

Record of original survey and citation of source of historical information (if corner is lost or obliterated). Description of corner monumentation evidence found and/or monument and accessories established to perpetuate the location of this corner. Sketch of relative location of monument, accessories, and reference points with course and distance to adjacent corner(s) (if determined in this survey). Method and rationale for reestablishment of lost or obliterated corner.

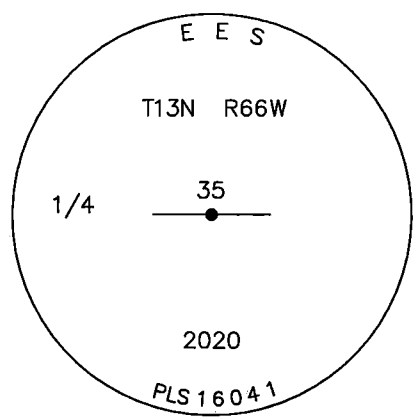
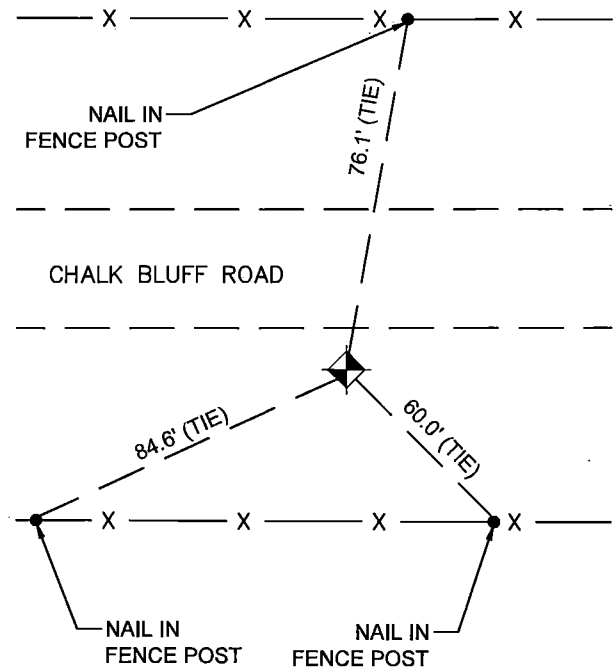
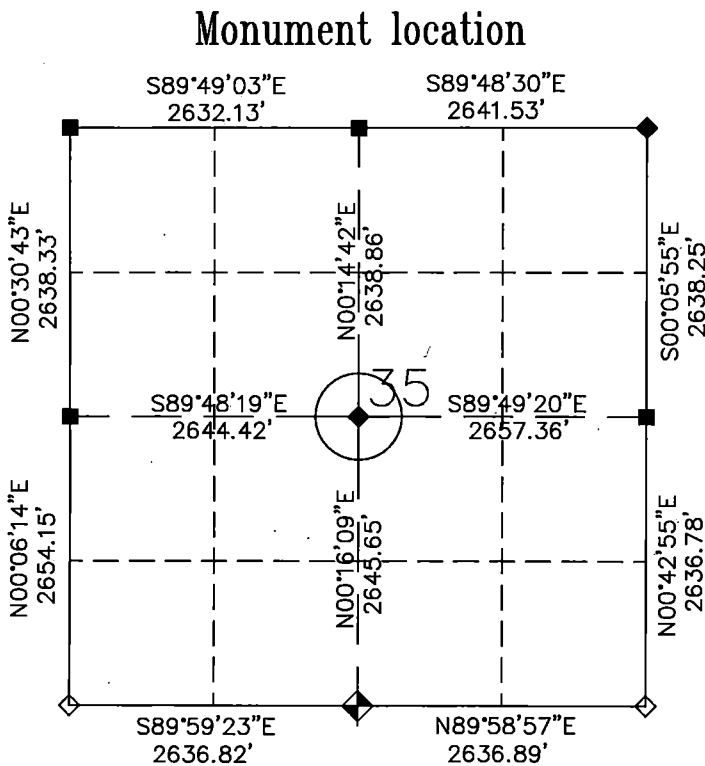
SET: #6 REBAR W/ 2 1/2" ALUM CAP PLS #16041. MEASURED TIES AS SHOWN.

## Legend

- ◆ MONUMENT FOR THIS CORNER RECORD
- FOUND STONE MONUMENT
- ◇ SET #6 REBAR W/ 2 1/2" ALUM CAP PLS #16041
- ◆ FOUND ALUM CAP

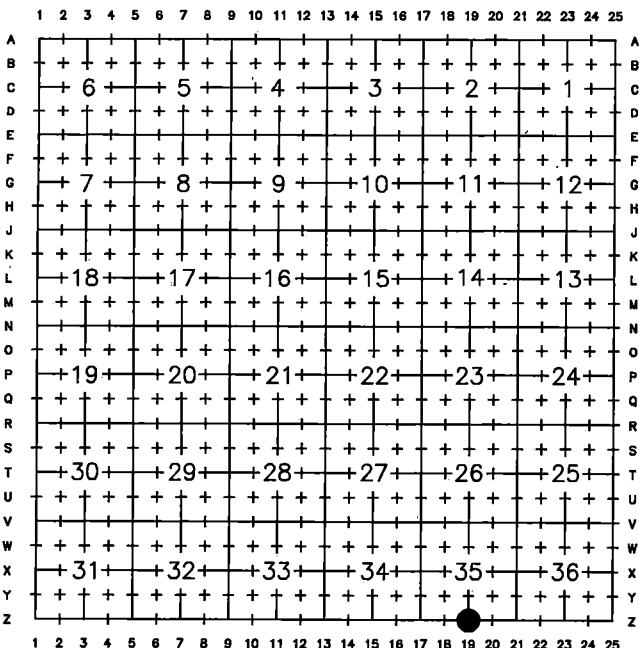
BEARINGS FROM GPS GRID NAD83 WY EAST

DISTANCES ARE GPS GRID CSF:



Date of Field Work: JANUARY, 2020 Office Reference: JOB NO. 61927

## Cross Index Plat

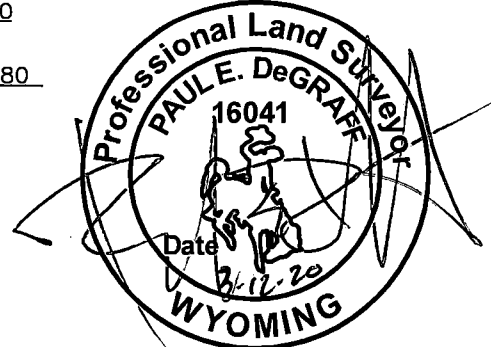


Firm/Agency, Address

Paul E. DeGraff  
 Encompass Energy Services  
 10901 W. 120th Ave., #400  
 Broomfield, CO 80021  
 Telephone: (303) 995-6080

This corner record was prepared by me or under my direction and supervision.

SEAL & SIGNATURE



RECP #: 802557  
 RECORDED 2/22/2021 AT 9:55 AM BK# 2720 PG# 1761  
 Debra K. Lee, CLERK OF LARAMIE COUNTY, WY PAGE 1 OF 1

Corner Name S 1/4 Corner Section 35, T 13 N, R 66 W, 6th P.M.

Index No.: Z-19